

# NEW AL WUROOD INTERNATIONAL SCHOOL, JEDDAH, K.S.A

Affiliated to CBSE – New Delhi, Affiliation No. 5730008



EVALUATION 1-June,2022-23

WORKSHEET

GRADE: V

SUBJECT: SCIENCE (CHAPTERS 1&2)

## SECTION-A

### II. Answer in a word:

(2 x 1= 2 M)

1. Write the name of the male part of a flower.
2. Name one reproductive and one vegetative part of a plant.

### II. Fill in the blanks

(5 x 1= 5 M)

3. The process of fusion of the male and female gametes is called. \_\_\_\_\_-
4. A flower may have either male or female reproductive parts. Such a flower is called \_\_\_\_\_.
5. The transfer of pollen grains from the anther to the stigma of the same or of another flower of the same kind is known as \_\_\_\_\_.
6. Ovule grows into ..... on fertilization.
7. Seed dispersal takes place by means of \_\_\_\_\_, \_\_\_\_\_, and \_\_\_\_\_

### III. Answer the following questions.

8. Match each seed with the most probable way in which it is dispersed by animals.

(3 x 1= 3 M)

Mango	•	•	by attaching itself to the fur
Burdock	•	•	by burial for later use
Acorn	•	•	by disposal after consumption

9. How do human beings help in the dispersal of seeds? (2)
10. Look at the picture and answer the questions. (2)



Dried fruit of a Shorea tree

Which part of the fruit helps with seed dispersal? Why?

11. Look at the picture of the lychee fruit and answer the questions.

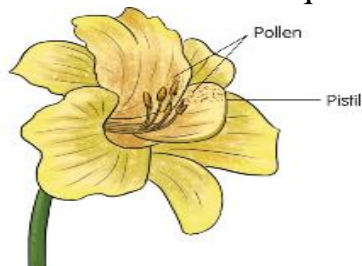


Lychee fruit

A. How many ovules does the flower of the lychee plant have?

B. Give a reason for your answer. (2)

12. Observe the picture and answer the questions. (2)



A. Name the type of pollination that is most likely to take place in the given flower

B. Explain how this type of pollination occurs in flowers.

13. Collect some flowers of different plants like papaya, rose, mustard, lady's finger, Petunia, cucumber, corn, pea, etc. Group them under the following heads. (3)

(a) Which of these plants have unisexual flowers?

(b) Which of these plants have a bisexual flower?

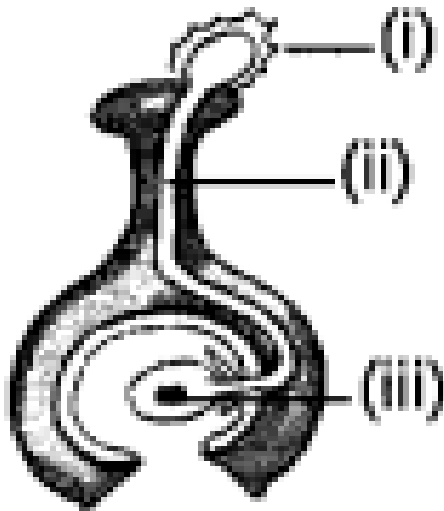
(c) What is the other name of the unisexual and bisexual flower?

14. Explain the Differentiate between self-Pollination and cross-pollination. (3)

15. Compare the dispersal of seeds by explosive actions with the dispersal of seeds by the wind

16. Birds eat strawberries along with the seeds. These seeds are dispersed through their dropping. How do these seeds survive inside the bird's stomach? (3)

17. In the figure given below, label the part marked (i), (ii), and (iii). (3)



18. Make a 4-step flowchart by writing the steps that lead to the formation of seeds after pollination. (5)

#### IV. CASE STUDY (5 marks)

19. Ravi was sitting in a garden with his family. His younger sister comes running with different types of flowers and starts to name their parts. She stops as she forgets some names and Ravi noticing this comes to help her.

His sister asks many questions related to flowers and Ravi answers her with all information he has.

(a) What is a flower and mention its function during reproduction?

(b) Flowers help in pollination and fertilization. Yes/No? Give reason.

(c) Do all flowers have both male and female parts on them specify?

**V. M.C.Q**

**(2 x 1= 2 M)**

20. The female gamete of a flowering plant is present in which part?

(a) Ovules

(b) Buds

(c) Pollen

(d) Anther

21. The process of fusion of the male and female gametes is called.

(a) Fertilization

(b) pollination

(c) reproduction

(d) seed formation